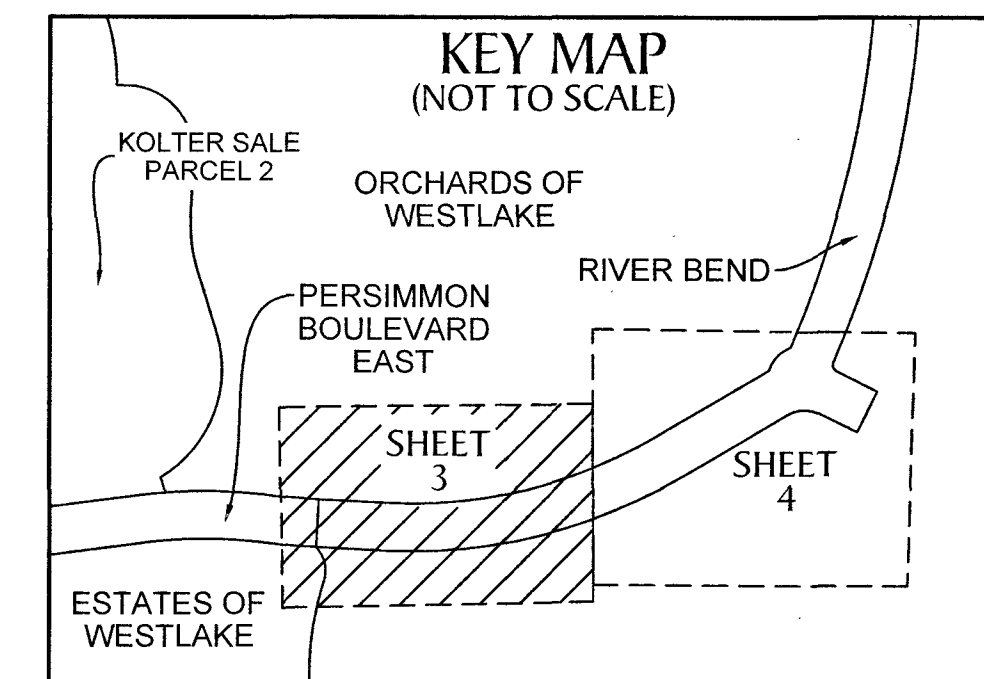
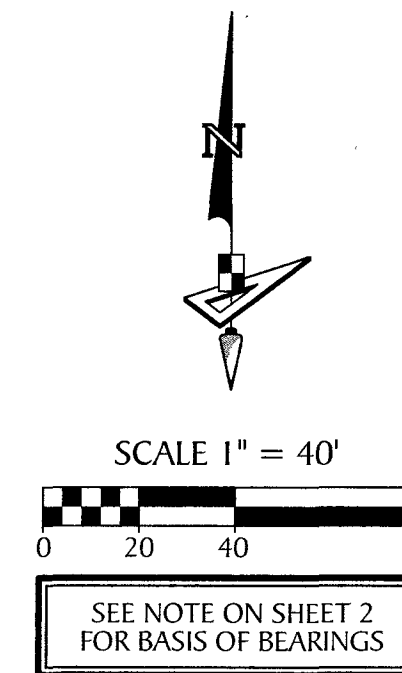


PERSIMMON BOULEVARD EAST - PLAT 5

BEING A PORTION OF SECTIONS 7 AND 8, TOWNSHIP 43 SOUTH, RANGE 41 EAST,
CITY OF WESTLAKE, PALM BEACH COUNTY, FLORIDA

LEGEND

- P.O.B. ----- POINT OF BEGINNING
- P.O.C. ----- POINT OF COMMENCEMENT
- P.B. ----- PLAT BOOK
- R.P.B. ----- ROAD PLAT BOOK
- D.B. ----- DEED BOOK
- O.R./O.R.B. ----- OFFICIAL RECORDS BOOK
- PG./PG(s) ----- PAGE(S)
- NAD ----- NORTH AMERICAN DATUM
- W.M.T. ----- WATER MANAGEMENT TRACT
- O.S.T. ----- OPEN SPACE TRACT
- P.B.C. ----- PALM BEACH COUNTY
- U.E. ----- UTILITY EASEMENT
- D.E. ----- DRAINAGE EASEMENT
- 7-43-41 ----- SECTION-TOWNSHIP-RANGE
- R ----- RADIUS
- L ----- ARC LENGTH
- D ----- DELTA ANGLE
- CB ----- CHORD BEARING
- C ----- CHORD
- N.T. ----- NON-TANGENT
- N.T.C. ----- NON-TANGENT CURVATURE
- P.C. ----- POINT OF CURVATURE
- P.T. ----- POINT OF TANGENCY
- R.C. ----- REVERSE CURVATURE
- R/W ----- RIGHT-OF-WAY
- CL ----- CENTERLINE
- (TYP.) ----- TYPICAL
- LB ----- LICENSE BUSINESS
- S.I.D. ----- SEMINOLE IMPROVEMENT DISTRICT
- PRM ----- PERMANENT REFERENCE MONUMENT
- ----- PERMANENT CONTROL POINT
- ----- FOUND PERMANENT REFERENCE MONUMENT
4"x4" CONCRETE MONUMENT WITH
2" ALUMINUM DISK STAMPED "PRM LB
7768" (UNLESS OTHERWISE NOTED)
- ----- SET 4"x4" CONCRETE MONUMENT WITH
2" ALUMINUM DISK STAMPED "PRM LB 7768"



181

POINT OF COMMENCEMENT
 NORTHWEST CORNER OF SECTION 6, TOWNSHIP 43 S., RANGE 41 E.
 3.5" IRON PIPE "PUBLIC LAND SURVEY
 CORNER TALLAHASSEE MERIDIAN"
 BRASS DISK "10' EAST" SET IN CONCRETE
 FOUND 10' EAST ON SECTION LINE
 N: 884626.7147 / E: 886137.1629
 NAD83 (2007 ADJUSTMENT)
 CERTIFIED CORNER RECORD #107597

NORTH BOUNDARY OF SECTION 6,
 TOWNSHIP 43 S., RANGE 41 E.

BASIS OF BEARINGS
 NORTH BOUNDARY OF SECTION 6,
 TOWNSHIP 43 S., RANGE 41 E.
 S89°48'53"E 5270.23'

NORTHEAST CORNER
 SECTION 6-43-41
 FOUND BRASS DISK IN
 CONCRETE "P.B.C."
 N: 884609.6818 E: 891407.3638
 NAD83 (2007 ADJUSTMENT)
 CERTIFIED CORNER
 RECORD #107591

NORTHEAST PLAT CORNER OF
 PERSIMMON BOULEVARD
 EAST - PLAT 4
 (P.B. 131, PG(s). 106 & 107)

P.O.B.
 N: 878501.5956
 E: 890266.6556

O.S.T. #12
 (P.B. 133, PG(s). 88-98)

32.00'
 D.E. & U.E.
 (P.B. 133, PG(s). 88-98)

FOUND 4"x4" PRM
 LB 7768
 (TYP.)

SOUTHERLY BOUNDARY LINE OF
 ORCHARDS OF WESTLAKE -
 PHASE II
 (P.B. 133, PG(s). 88-98)

LIMITS
 OF PLAT

O.S.T. #12
 (P.B. 133, PG(s). 88-98)

R=1998.00'
L=1170.88'
D=33°34'37"
(TOTAL)

W.M.T. #9
 (P.B. 133, PG(s). 88-98)

S87°22'37"E 292.26'

(TOTAL)

D=33°34'37"

(TOTAL)

C=1213.12'

(TOTAL)

CB=N67°26'27"E

(TOTAL)

C=613.13'

(TOTAL)

D=33°34'37"

(TOTAL)

D=16°47'23"

(TOTAL)

D=33°34'37"

(TOTAL)

(TOTAL)

(TOTAL)

(TOTAL)

(TOTAL)

(TOTAL)

(TOTAL)

(TOTAL)

(TOTAL)

(TOTAL)

(TOTAL)

(TOTAL)

(TOTAL)

(TOTAL)

(TOTAL)

(TOTAL)

(TOTAL)

(TOTAL)

(TOTAL)

(TOTAL)

(TOTAL)

(TOTAL)

(TOTAL)

(TOTAL)

(TOTAL)

(TOTAL)

(TOTAL)

EAST BOUNDARY OF SECTION 7
 TOWNSHIP 43 SOUTH, RANGE 41 EAST
 WEST BOUNDARY OF SECTION 8
 TOWNSHIP 43 SOUTH, RANGE 41 EAST

MATCH LINE (SHEET 4)

